

ICP PANEL-TEC

**MICROBRIDGE
INSTALLATION**

AND

**OPERATION
GUIDE**

**MODBUS/TCP TO
SIEMENS
G110/G120/MM440
APPLICATION**

Revision History

Revision	Date	Author	Comments
000	02 June 2009	David Walker	Initial release.
001	25 January 2010	David Walker	<ul style="list-style-type: none">• Added drawing of unit and dimensions to Hardware section
002	4 March 2010	David Walker	<ul style="list-style-type: none">• Corrected configuration cable• Changed configuration port from 'Local' to 'Network'

TABLE OF CONTENTS

INTRODUCTION	4
SERIAL PORT OVERVIEW.....	4
ETHERNET PORT OVERVIEW	4
ORDERING INFORMATION	4
HARDWARE	5
DIMENSIONS.....	5
POWER SUPPLY	5
SERIAL PORT PINOUTS	6
ETHERNET PORT PINOUT.....	6
SIEMENS DRIVE CABLE (G110 / G120 WITH CU240E / MM440).....	6
SIEMENS DRIVE CABLE (G120 WITH CU240S).....	7
CONFIGURATION CABLE	7
LED INDICATORS.....	8
MICROBRIDGE CONFIGURATION	9
DEFAULT CONFIGURATION	9
CHANGING THE CONFIGURATION	10
XPORT CONFIGURATION	11
OBTAINING THE IP ADDRESS	11
ENTERING CONFIGURATION MODE	11
CHANGING THE CONFIGURATION	12
SIEMENS DRIVE SETUP	13
SIEMENS DRIVE PARAMETER CONFIGURATION.....	13
USS WATCHDOG TIMER SETUP	13
VERIFYING THE INSTALLATION	13
MODBUS REGISTERS	14
REGISTERS MAPPED TO UNSUPPORTED PARAMETERS	14
MODBUS WATCHDOG TIMER SETUP	14

INTRODUCTION

The Modbus/TCP to G110/G120/MM440 version of the MicroBridge connects one G110, G120, or MM440 drive to a Modbus/TCP Network via Ethernet. A pre-defined set of Modbus registers are provided to allow access to the most common drive parameters, monitor values, setpoint values, and control points for the drive.

The MicroBridge device is a light-weight DIN Rail Mountable unit with 2 serial ports, an Ethernet port, and 6 LED indicators. It is powered with a DC supply providing any voltage between 7 and 28 volts.

The MicroBridge has a built-in configuration utility. The configuration screens are accessed through any terminal communication program such as HyperTerminal.

Serial Port Overview

The MicroBridge has two DB9 serial ports. Both ports can be used in either RS232 mode or 2-Wire RS485 mode. The RS485 signals are located on the same pins on both ports. They are placed on pins that are not generally used for RS232 communications so off-the-shelf RS232 cables can be used when operating in RS232 mode. Both ports will operate at any standard baud rate from 1200 to 115,200 baud. Most character framing combinations of data bits, parity, and stop bits are supported.

One DB9 port is a female port referred to as the Local port (LCL) and is used to connect the MicroBridge to the Siemens drive. The RS232 signals on the Local port use a DCE configuration. An LED indicator is used to reflect transmit/receive activity on this port.

The other DB9 port is a male port referred to as the Network port (NET) and is used to configure the MicroBridge using the built-in configuration utility. The RS232 signals on the Network port use a DTE configuration, requiring a null-modem cable to be used during configuration mode. An LED indicator is used to reflect transmit/receive activity on this port.

Ethernet Port Overview

The MicroBridge also has a single Ethernet port, implemented using an [®]XPort module (information on the XPort can be found at www.gridconnect.com/gc-xport-mbtcp.html). The Ethernet port supports both 10 and 100 Mbit/sec communications, and is used to connect the MicroBridge to a Modbus/TCP network. An LED indicator is used to reflect transmit/receive activity of Modbus messages on this port.

Ordering Information

The MicroBridge product is sold with several different software applications. To ensure that the correct version of the MicroBridge is procured, please include the correct part number when ordering. Part numbers for the MicroBridge, power supply and cables for the Modbus to G110/G120/MM440 application are as follows:

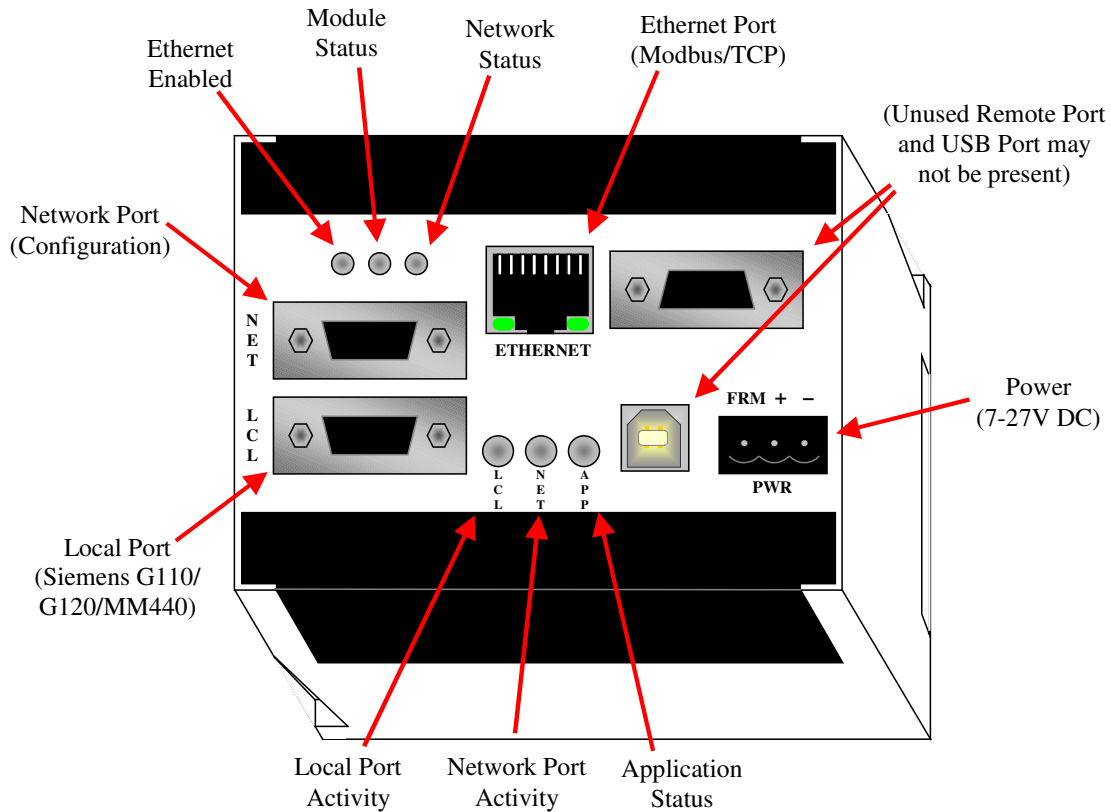
Table 1 - Part Numbers

Part Number	Description
5010-404-102	MicroBridge with Modbus/TCP-G110/G120/MM440 Application
4000-0205	MicroBridge Power Supply
6000-0003	MicroBridge Local Port Drive Cable (RS485 cable with stripped wires for connection to terminal block)
6000-0007	MicroBridge Local Port G120 Drive Cable (RS485 cable for connection to DB9 on CU240S)
6000-0010	MicroBridge Configuration Cable (Null Modem)

HARDWARE

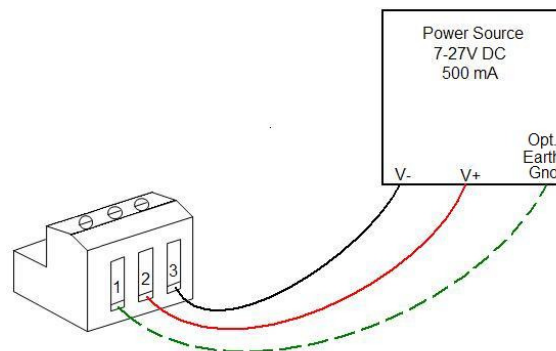
Dimensions

The MicroBridge is packaged in a 10cm x 7.5cm x 11cm plastic box, with a din-rail mounting on the bottom. The serial and Ethernet ports, leds, and power connector are on the top of the unit.



Power Supply

The MicroBridge requires a power supply of 7-24V DC at 500 mA. A 3-position pluggable terminal block is used to connect the power supply. The following diagram shows the wiring of the power supply.



Serial Port Pinouts

The pin configuration for the two DB9 serial ports are shown in the table below.

Table 2 - Serial Port Pinouts

Local: DB9-Female			Network: DB9-Male		
Pin	Label	Description	Pin	Label	Description
1	485+	RS485 D+	1	485+	RS485 D+
2	TXD	RS232 TxD	2	RXD	RS232 RxD
3	RXD	RS232 RxD	3	TXD	RS232 TxD
4	DTR	RS232 DTR	4	-	No Connect
5	GND	Reference Ground	5	GND	Reference Ground
6	485-	RS485 D-	6	485-	RS485 D-
7	RTS	RS232 RTS	7	CTS	RS232 CTS
8	CTS	RS232 CTS	8	RTS	RS232 RTS
9	VCC	+5VDC Input	9	-	No Connect

Ethernet Port Pinout

The pin configuration of the Ethernet port is shown in the table below.

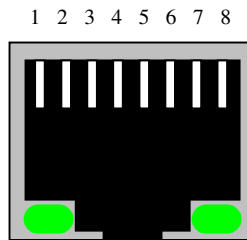


Table 3 - Ethernet Port Pinout

Ethernet: RJ45 Socket		
Pin	Label	Description
1	TD+	Transmit Data+
2	TD-	Transmit Data-
3	RD+	Receive Data+
4	-	no connection
5	-	no connection
6	RD-	Receive Data-
7	-	no connection
8	-	no connection

Siemens Drive Cable (G110 / G120 with CU240E / MM440)

One end of the RS485 Siemens Drive cable (Part # 6000-0003) connects to the DB9 Female Local port on the MicroBridge. The other end of the cable has stripped wires for connection to the corresponding terminals on the drive.

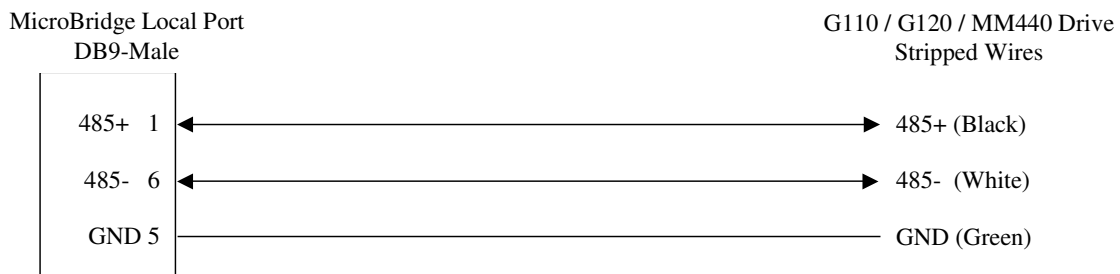


Figure 1 - G110 / G120 / MM440 Drive Cable

Siemens Drive Cable (G120 with CU240S)

One end of the RS485 Siemens Drive cable (Part # 6000-0007) connects to the DB9 Female Local port on the MicroBridge. The other end of the cable connects to the DB9 Female connector on the CU240S module.

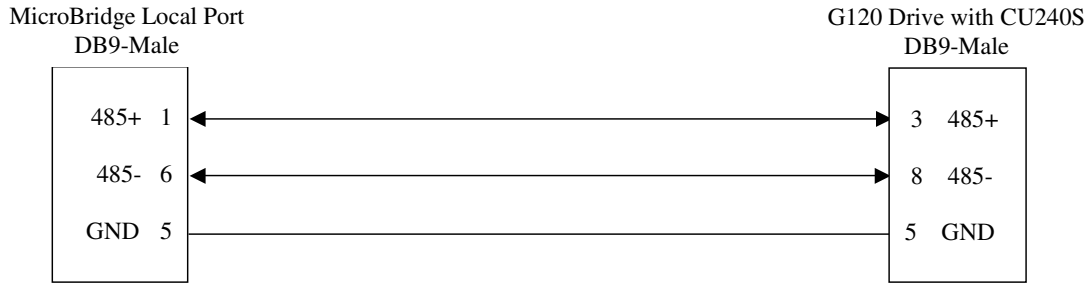


Figure 3 - G120 with CU240S Cable

Configuration Cable

One end of the MicroBridge Configuration cable (Part # 6000-0010) connects to the DB9 Male Network port on the MicroBridge during configuration mode. The other end connects to a serial port on a PC. A standard off-the-shelf null-modem DB9-F to DB9-F cable (pins 2 and 3 crossed) can be used as well.

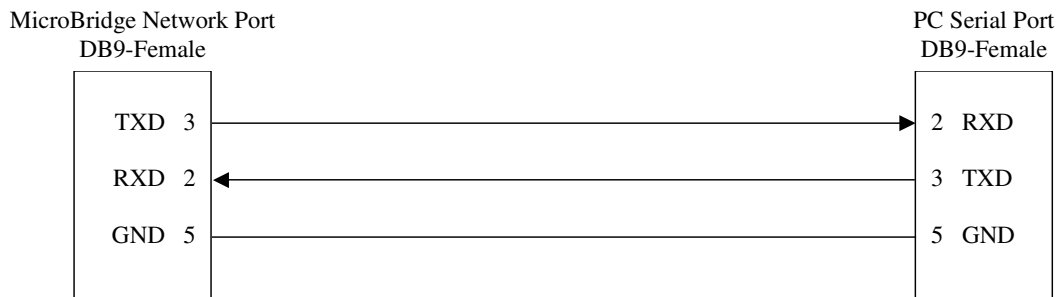


Figure 4 - Configuration Cable (null-modem)

LED Indicators

There are a total of 6 Bi-color LED indicators on the MicroBridge. The LCL, NET, and STAT LEDs are located next to the Local Port on the MicroBridge. The LCL LED displays communications activity on the Local (Siemens drive) port. The NET LED displays communications activity on the Network (Configuration) port during configuration mode, or on the Ethernet port during run mode. The STATUS LED displays the overall status of the MicroBridge. During normal operations, the LCL and NET LEDs will quickly alternate red and green flashes, making them look almost amber. This is normal.

The other three LEDs are located next to the Ethernet port on the MicroBridge. The NS LED (closest to the Ethernet Port) displays the network status of the MicroBridge. The MS LED (the middle of the three) displays the module status of the MicroBridge. The ETH LED (farthest from the Ethernet port) indicates whether the Ethernet port is enabled on the MicroBridge.

Table 3 – MicroBridge General Status LED (STATUS)

For this state:	LED is:	To indicate:
No Power	Off	There is no power applied to the device.
Run Mode	Flashing Green (250ms On, 250ms Off)	The MicroBridge is operating normally in RUN Mode.
Configuration Mode	Flashing Green (1.5 sec On, 1.5 sec Off)	The MicroBridge is in Configuration Mode.
Fatal Error	Flashing Yellow (250ms On, 250ms Off)	The MicroBridge has experienced a fatal error, and has halted communications.

Table 4 - Network Port Communications Activity LED (NET)

For this state:	LED is:	To indicate:
Receive Data	Red	The MicroBridge is receiving data from the Modbus/TCP network.
Transmit Data	Green	The MicroBridge is transmitting data to the Modbus/TCP network.

Table 5 - Local Port Communications Activity LED (LCL)

For this state:	LED is:	To indicate:
Receive Data	Red	The MicroBridge is receiving data from the Siemens Drive.
Transmit Data	Green	The MicroBridge is transmitting data to the Siemens Drive.

Table 4 - Network Status LED (NS)

For this state:	LED is:	To indicate:
Inactive	Off	The MicroBridge is not connected to a Modbus/TCP host.
Transmit Data	Green	The MicroBridge is connected to a Modbus/TCP host.

Table 5 - Module Status LED (MS)

For this state:	LED is:	To indicate:
No Power	Off	There is no power applied to the device.
Run Mode	Green	The MicroBridge is operating normally in RUN Mode.

Table 6 - Ethernet Enabled LED (ETH)

For this state:	LED is:	To indicate:
Disabled	Red	The Ethernet Port is not enabled on the MicroBridge.
Enabled	Green	The Ethernet Port is enabled on the MicroBridge.

MICROBRIDGE CONFIGURATION

Default Configuration

Modbus/TCP communications is implemented using an XPort module, which converts Modbus/TCP requests to internal Modbus/RTU requests for processing. The internal Modbus communications settings are fixed on the MicroBridge, and must be matched by the XPort. The settings are as follows:

Table 7 - Required Modbus Settings for XPort

Parameter	Setting
Protocol	Modbus/RTU
Port Mode	Slave
Port Type	RS232
Modbus ID	2
Baud Rate	115200 bps
Data Bits	8
Parity	Even
Stop Bits	1

The Local Port on the MicroBridge is configured for communications with a Siemens drive using the Siemens USS protocol. The configuration parameters that may be changed are shown in the following table:

Table 8 – G120 / MM440 Port Configuration Options

Parameter	Options	Default
Port Type	2-wire RS485 RS232	2-wire RS485
USS Baud Rate	2400 bps 4800 bps 9600 bps 19200 bps 38400 bps 57600 bps 76800 bps 93750 bps 115200 bps	38400 bps

Changing the Configuration

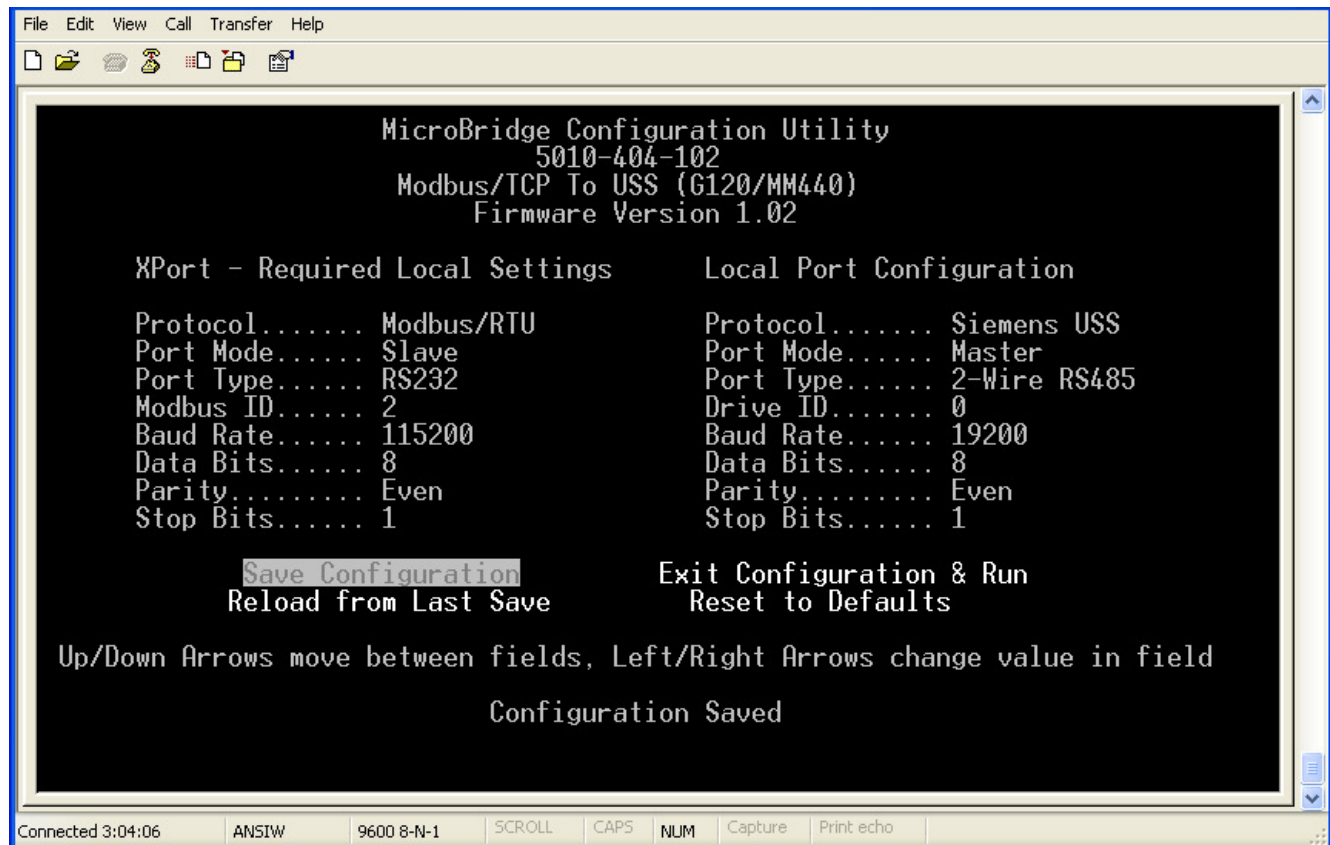
The configuration stored in the MicroBridge may be changed from the default configuration by entering Configuration Mode. The following steps are required to enter Configuration Mode.

1. Attach a configuration cable between the Network port on the MicroBridge and a serial port on a PC.
2. Start a terminal program, such as HyperTerminal, on the PC, and connect using the following settings:
 - o Baud = 9600 bps
 - o Data bits = 8
 - o Parity = None
 - o Stop Bits = 1
 - o Flow Control = None
3. Apply power to the MicroBridge, and send a carriage return (press the **Enter** key) within 5 seconds of startup.

Once the MicroBridge is in Configuration Mode, it will send its current configuration information to the terminal program.

Use the **up** and **down** arrows on your keyboard to navigate to the field you want to change, then use the **left** and **right** arrows to change the value in that field. When you are finished, navigate to “Save Configuration” and press the **Enter** key to save the configuration information to the MicroBridge.

Once the configuration has been saved, remove power from the MicroBridge and remove the configuration cable.



XPORT CONFIGURATION

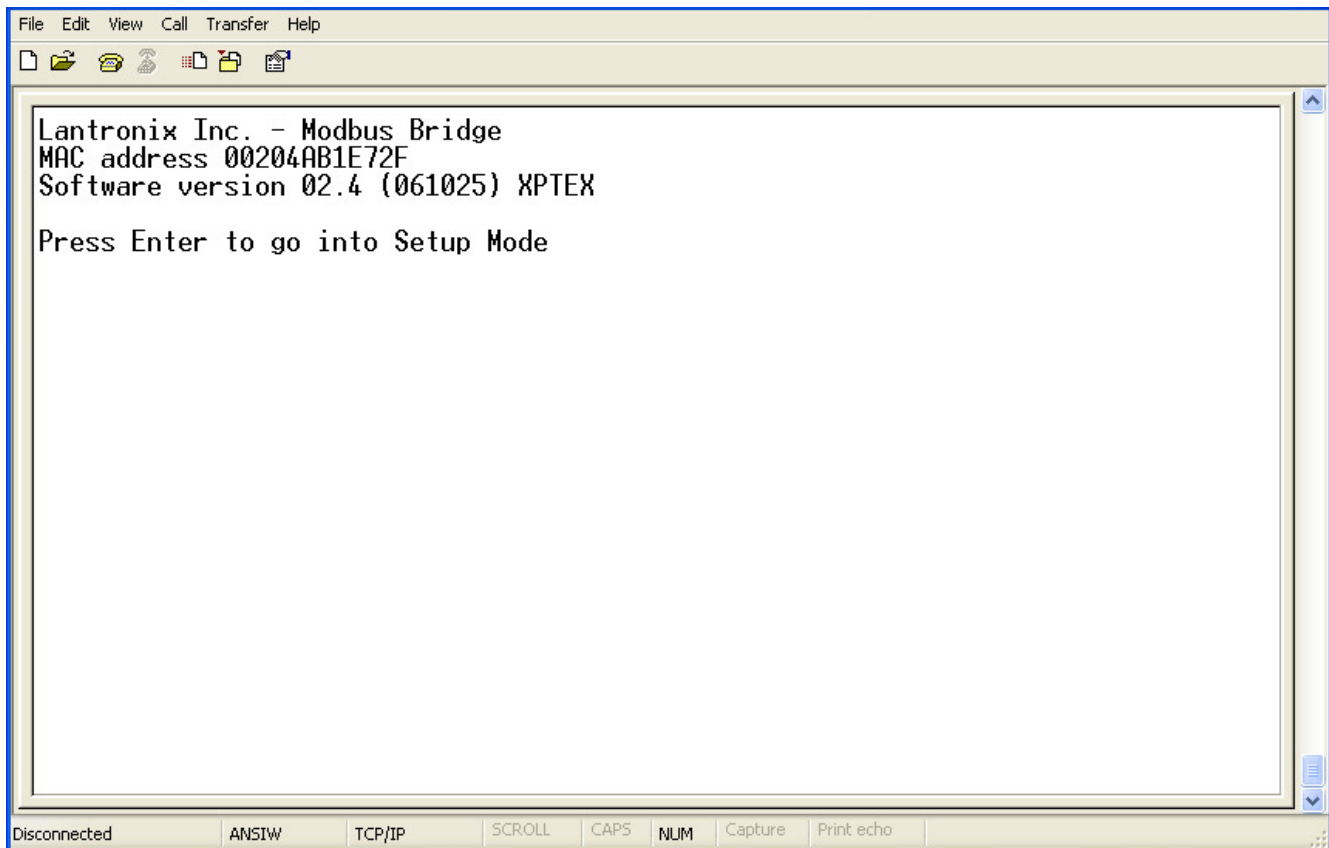
The XPort module may be configured via Ethernet using Telnet (any terminal program which supports the Telnet protocol (such as HyperTerminal) may be used to configure the XPort. The XPort must be configured with a valid (and unique) IP address and SubNet mask for the local network before using it on that network.

Obtaining the IP Address

If the IP Address for the XPort is not known, it may be discovered using the Lantronix DeviceInstaller software (available at www.lantronix.com). Simply run DeviceInstaller, and click on Search. When the XPort appears in the list, use either the Assign IP button or Telnet button to assign an IP address to the XPort.

Entering Configuration Mode

To configure the XPort, connect the MicroBridge via Ethernet to the Telnet client (if you are using HyperTerminal on a PC, the PC is the client). The IP Address should be the current IP Address of the XPort, and the Port Number should be 9999. When the Telnet client is connected to the XPort, the following screen is displayed:



Changing the Configuration

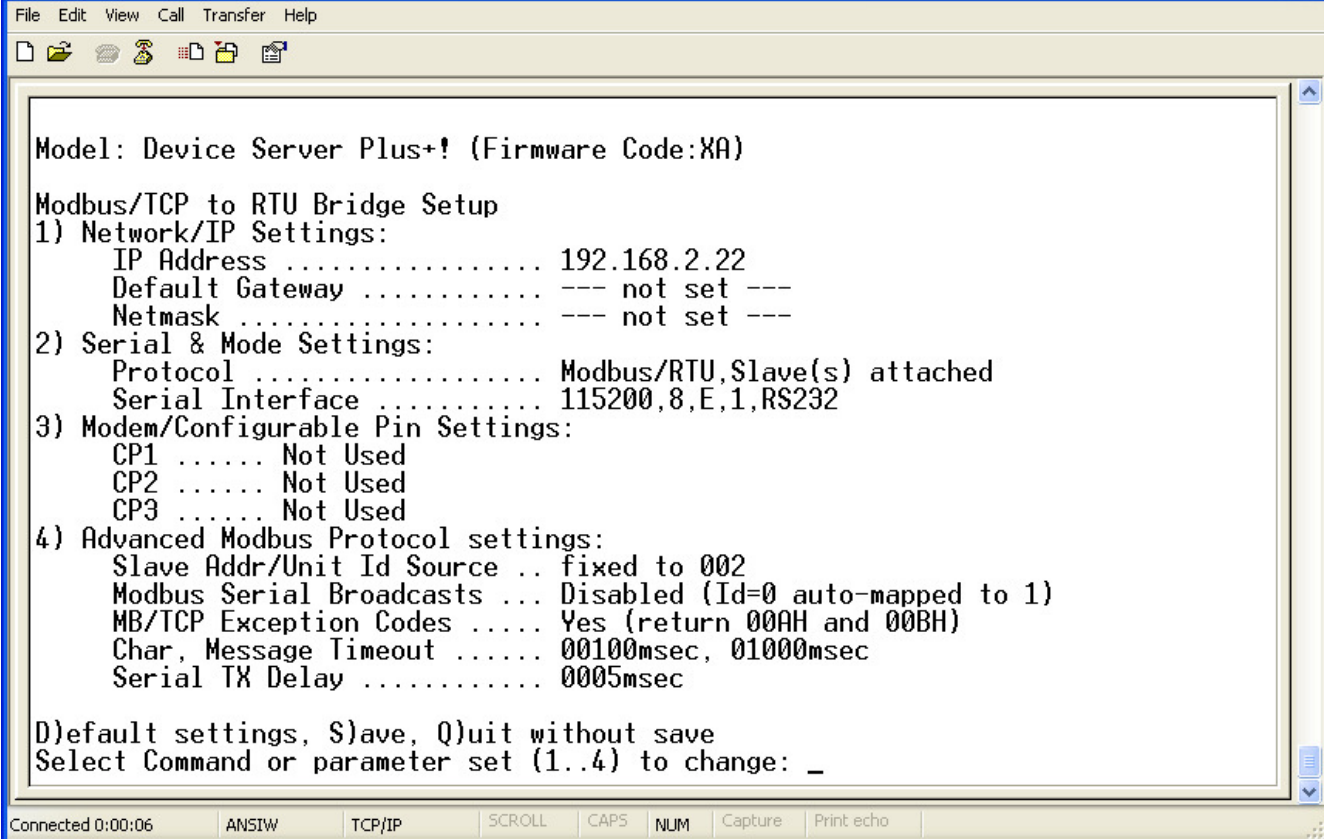
When the Enter key is pressed, the Device Server Plus+! screen is displayed.

Type "1" to modify the Network/IP Settings (parameter set 1). Parameter sets 2, 3, and 4 should not be changed, as those settings are necessary to ensure proper communications between the XPort and the MicroBridge.

Once the Network/IP Settings have been modified, press "S" to save the new settings. The XPort will automatically restart with the new settings.

Warning! Do not press "D" (Default Settings). The default XPort settings are not compatible with the MicroBridge. If "D" is pressed, press "Q" to quit without saving, then reconnect and try again.

If the settings are changed to the default settings, or if options 2, 3, or 4 are modified, it will be necessary to change them back to the required settings for MicroBridge operation. Consult the following screen for the correct settings.



```
File Edit View Call Transfer Help
Model: Device Server Plus+! (Firmware Code:XA)
Modbus/TCP to RTU Bridge Setup
1) Network/IP Settings:
   IP Address ..... 192.168.2.22
   Default Gateway ..... --- not set ---
   Netmask ..... --- not set ---
2) Serial & Mode Settings:
   Protocol ..... Modbus/RTU,Slave(s) attached
   Serial Interface ..... 115200,8,E,1,RS232
3) Modem/Configurable Pin Settings:
   CP1 ..... Not Used
   CP2 ..... Not Used
   CP3 ..... Not Used
4) Advanced Modbus Protocol settings:
   Slave Addr/Unit Id Source .. fixed to 002
   Modbus Serial Broadcasts ... Disabled (Id=0 auto-mapped to 1)
   MB/TCP Exception Codes .... Yes (return 00AH and 00BH)
   Char, Message Timeout ..... 00100msec, 01000msec
   Serial TX Delay ..... 0005msec

D)efault settings, S)ave, Q)uit without save
Select Command or parameter set (1..4) to change: _
```

Connected 0:00:06 ANSIW TCP/IP SCROLL CAPS NUM Capture Print echo

SIEMENS DRIVE SETUP

Siemens Drive Parameter Configuration

The Siemens drive must be configured before the MicroBridge will communicate properly with the drive. The MicroBridge communicates with the drive through the USS interface. The baud-rate for the USS network is configurable but defaults to 38.4K baud.

To setup the drive for communications with a MicroBridge, the drive parameters in the following table must be configured with the values shown via the drive keypad or Starter software.

Table 9 - Siemens Drive Parameter Configuration

G120 Parameter	Function	Set Value
P0003	User Access Level	3 (Expert Setting)
P0700[0]	Command Source	5 if Starting/Stopping Drive from Modbus Otherwise: Do Not Change
P1000[0]	Frequency Setpoint Source	5 if Setting the Frequency from Modbus Otherwise: Do Not Change
P2009[0]	USS Normalization	0 (Disabled) Only for MM440
P2010[0]	USS Baud Rate	8 (38.4K baud)
P2011[0]	USS Address	0
P2012[0]	USS PZD Length	2
P2013[0]	USS PKW Length	127 (Variable)
P2014[0]	USS telegram off time	0 to Disable the USS “watchdog” timer, or > 0 to enable the USS “watchdog” timer (NOTE: values less than 100ms are not recommended)
P2041[0]	Protocol Selection for RS485 port	0 (USS Protocol) Only for MM440

USS Watchdog Timer Setup

The drive has a timeout function for the USS port, which is controlled by Parameter 2014, “USS telegram off time”. Once the MicroBridge has established communications with a drive with the watchdog function enabled, the watchdog timer is activated. If communications are subsequently lost for the specified length of time, the drive will automatically generate a F0072 fault. Setting Parameter 2014 to a value of 0 disables the watchdog timer function. Setting Parameter 2014 to a non-zero value enables the watchdog timer function with the specified time. Avoid setting this value too low, as that could result in false fault indications.

Verifying the Installation

After all necessary connections have been made, power up the drive and the MicroBridge, and wait approximately 5 seconds. If the MicroBridge has been installed correctly, the STAT led will be flashing green, and the LCL led will be alternating so fast between red and green that it will appear to be glowing amber.

To verify that the MicroBridge and drive are set up correctly, set P0700[0] to a value of 5 and P1000[0] to a value of 5 so that the drive can be controlled from the Modbus/TCP network. From the Modbus/TCP host, issue a Modbus write with a value of 1 to the Control from PLC register (40013) to enable drive remote control. Then, write a value of 5000 (50% of the maximum frequency) to the Main Setpoint register (40019), followed by a value of 1 to the appropriate Enable register(s). Write a value of 1 to the ON/OFF1 register (40003), and the drive should start running. Write a value of 0 to the ON/OFF1 register to stop the drive. The drive frequency can be changed at any time during this process by writing to the Main Setpoint register (40019).

MODBUS REGISTERS

The following table contains the list of all Modbus holding registers available on the MicroGate. The Modbus/TCP host may write to Registers 40001 through 40039. All other registers are read-only.

There is a scaling factor included for some of the registers. Because Modbus does not represent floating point numbers, all floating point values in the drive are converted to integer register values by applying a scaling (multiplication) factor. The scaling factors are in the range of 10 to 1000. For example: “Ramp Up Time” has a scaling factor of 100. If the drive contains a value of 20.50, then the “Ramp Up Time” register will contain a value of 2050.

STW and HSW refer to the 1st and 2nd words, respectively, of PZD data included in every poll sent from the MicroBridge to the drive via the USS protocol. ZSW and HIW refer to the 1st and 2nd words, respectively, of PZD data included in every poll response sent from the drive to the MicroBridge via the USS protocol. Registers mapped to PZD data are updated frequently.

All other parameters (except “Watchdog Action” and “Watchdog Time”, which are handled internally in the MicroBridge) are mapped to parameters in the drive, and are updated cyclically. Registers mapped to *monitor* parameters – parameters such as “Actual Current”, or “Output Power”, whose values change automatically during normal operation of the drive, without the intervention of an operator – are updated at a rate of approximately once per second. Registers mapped to *setup* parameters – parameters such as “Ramp Up Time” or “Frequency MAX Limit”, whose values typically change only via intervention by an operator – are updated at a rate of approximately once every 5 seconds.

Registers Mapped to Unsupported Parameters

If a particular parameter is not supported in the drive, then the corresponding Modbus register from the register map will not be supported unless it is noted as reserved. Attempts to read or write that register will result in an exception response. Attempts to read or write a block of register including one or more unsupported registers (not reserved registers which are ok) will result in an exception response. For example, if PID functionality is disabled in the drive, such that parameter r2260 is not supported, then attempts to read Modbus register 40090 will result in a Modbus exception response.

Modbus Watchdog Timer Setup

The MicroBridge includes a watchdog timer function for Modbus/TCP communications. When this function is enabled, the MicroBridge will stop the drive if it is running under Modbus/TCP control and Modbus/TCP communications are lost for the specified period of time. This Modbus/TCP host controls the watchdog timer function via Modbus holding registers 40001 (Watchdog Time) and 40002 (Watchdog Action) on the MicroBridge. To activate the Modbus watchdog timeout function, the Modbus/TCP host should set the “Watchdog Time” register to the desired timeout period (in milliseconds), then set the “Watchdog Action” register to a value of 1. To disable the Modbus watchdog timeout function, the Modbus/TCP host should set the “Watchdog Action” register to a value of 0.

Table 10 - Modbus Registers

Register	Description	Units	Scaling Factor	1	0	Parameter Reference
				Range		
40001	Watchdog Time	ms	1	0...65535		--
40002	Watchdog Action	--	--	Stop Drive	No Action	--
40003	ON/OFF1	--	--	ON	OFF1	STW1:0
40004	No OFF2	--	--	No OFF2	OFF2	STW1:1
40005	No OFF3	--	--	No OFF3	OFF3	STW1:2
40006	Pulse Enable	--	--	Enable	Off	STW1:3
40007	RFG Enable	--	--	Enable	Off	STW1:4
40008	RFG Start	--	--	Start	Off	STW1:5
40009	Setpoint Enable	--	--	Enable	Off	STW1:6
40010	Fault Acknowledge	--	--	Ack On	Off	STW1:7
40011	Jog Right	--	--	Yes	No	STW1:8
40012	Jog Left	--	--	Yes	No	STW1:9
40013	Control From PLC	--	--	Yes	No	STW1:10
40014	Reverse Command	--	--	Reverse	Forward	STW1:11
40015	Reserved	--	--	--	--	STW1:12
40016	MOP Up	--	--	Yes	No	STW1:13
40017	MOP Down	--	--	Yes	No	STW1:14
40018	CDS Bit 0,Local/Remote	--	--	Local	Remote	STW1:15
40019	Main Setpoint	%	100	-200.00...200.00		HSW
40020	Ramp Up Time	sec	100	0.00...650.00		P1120[0]
40021	Ramp Down Time	sec	100	0.00...650.00		P1121[0]
40022	Current Limit	%	10	10.0...400.0		P0640[0]
40023	Frequency MAX Limit	Hz	100	1.00...649.99		P1082[0]
40024	Frequency MIN Limit	Hz	100	0.00...649.99		P1080[0]
40025	OFF3 Ramp Down Time	sec	100	0.00...650.00		P1135[0]
40026	PID Enable	--	--	Enable	No	P2200[0]
40027	PID Filter Time Constant	sec	100	0.00...60.00		P2265
40028	PID D Gain	sec	1000	0.000...60.000		P2274
40029	PID P Gain	--	1000	0.000...65.000		P2280
40030	PID I Gain	sec	1000	0.000...60.000		P2285
40031	PID Up Limit	%	100	-200.00...200.00		P2291
40032	PID Down Limit	%	100	-200.00...200.00		P2292

Register	Description	Units	Scaling Factor	1	0	Parameter Reference
				Range		
40033	Reserved	--		Must be 0		--
40034	Reserved	--		Must be 0		--
40035	Reserved	--		Must be 0		--
40036	Reserved	--		Must be 0		--
40037	Reserved	--		Must be 0		--
40038	Reserved	--		Must be 0		--
40039	Reserved	--		Must be 0		--
40040	Drive Ready	--		Drive ready	No	ZSW1:0
40041	Drive Ready to Run	--		Ready to run	No	ZSW1:1
40042	Drive Running	--		Running	No	ZSW1:2
40043	Drive Fault Active	--		Fault	Ok	ZSW1:3
40044	No OFF2 Active	--		No OFF2	OFF2	ZSW1:4
40045	No OFF3 Active	--		No OFF3	OFF3	ZSW1:5
40046	On Inhibit Active	--		Inhibited	Ok	ZSW1:6
40047	Drive Alarm Active	--		Alarm	Ok	ZSW1:7
40048	Speed Setpoint Deviation	--		No	Yes	ZSW1:8
40049	PZD Control	--		Yes	No	ZSW1:9
40050	At Max Frequency	--		At Max	No	ZSW1:10
40051	Motor Current Alarm	--		No	Alarm	ZSW1:11
40052	Holding Brake Active	--		Active	No	ZSW1:12
40053	Motor Overload	--		No	Overload	ZSW1:13
40054	Motor Runs Forward	--		Forward	Reverse	ZSW1:14
40055	Inverter Overload	--		No	Overload	ZSW1:15
40056	Actual Frequency	%	100	-200.00...200.00		HIW
40057	Speed Setpoint	Hz	10	-3250.0...3250.0		r0020
40058	Output Frequency	Hz	10	-3250.0...3250.0		r0024
40059	Output Voltage	Vac	10	-3250.0...3250.0		r0025
40060	DC Link Voltage	Vac	10	-3250.0...3250.0		r0026[0]
40061	Actual Current	A	100	0.00...655.35		r0027
40062	Actual Torque	Nm	10	-3250.0...3250.0		r0031
40063	Output Power	kW/Hp	100	-325.00...325.00		r0032
40064	Motor Temperature	°C	100	0.00...200.00		r0035[0]
40065	Power Unit Temperature	°C	100	0.00...200.00		r0037[0]

Register	Description	Units	Scaling Factor	1	0	Parameter Reference
				Range		
40066	Energy kWh	kWh	1	0...65535		r0039
40067	CDS Eff (Local Mode)	--	1	0...2		r0050
40068	Status Word 2	--	Bit Mask	0000-FFFF		r0053
40069	Control Word 1	--	Bit Mask	0000-FFFF		r0054
40070	Motor Speed (Encoder)	Hz	10	-650.0...650.0		r0061
40071	Digital Inputs	--	Bit Mask	0000-FFFF		r0722
40072	Digital Outputs	--	Bit Mask	0000-FFFF		r0747
40073	Analog Input 1	V/ma	1000	-20.000...20.000		r0752[0]
40074	Analog Input 2	V/ma	1000	-20.000...20.000		r0752[1]
40075	Analog Output 1	V/ma	1000	-20.000...20.000		r0774[0]
40076	Analog Output 2	V/ma	1000	-20.000...20.000		r0774[1]
40077	Fault Code 1	--	1	0...65535		r0947[0]
40078	Fault Code 2	--	1	0...65535		r0947[1]
40079	Fault Code 3	--	1	0...65535		r0947[2]
40080	Fault Code 4	--	1	0...65535		r0947[3]
40081	Fault Code 5	--	1	0...65535		r0947[4]
40082	Fault Code 6	--	1	0...65535		r0947[5]
40083	Fault Code 7	--	1	0...65535		r0947[6]
40084	Fault Code 8	--	1	0...65535		r0947[7]
40085	Pulse Frequency	kHz	100	0...16		r1801
40086	Alarm Code 1	--	1	0...65535		r2110[0]
40087	Alarm Code 2	--	1	0...65535		r2110[1]
40088	Alarm Code 3	--	1	0...65535		r2110[2]
40089	Alarm Code 4	--	1	0...65535		r2110[3]
40090	PID Setpoint Output	%	100	-100.00...100.00		r2260
40091	PID Feedback	%	100	-100.00...100.00		r2266
40092	PID Output	%	100	-100.00...100.00		r2294
40093	Reserved	--		Always 0		--
40094	Reserved	--		Always 0		--
.....	Reserved	--		Always 0		--
40099	Reserved	--		Always 0		--
40100	Reserved	--		Always 0		--